



St Martins School Year 3 Meet and Greet

Staff – Who will teach your child?

- ▶ Mr Edwards – Main Class Teacher
- ▶ Mrs Eales – LSA
- ▶ Mrs C Jones – Spellings and PSHE (**Wednesday**)
- ▶ Mr James – Music (**Monday**)
- ▶ Miss Machin – PE (**Thursday**)

School Day

- ▶ 8.45am - School gate opens
- ▶ 8.50am - Children come into class
- ▶ 8.55am – Morning register
- ▶ 10.20am - Break time
- ▶ 12.15pm - Lunch time
- ▶ 1.10pm - Afternoon lessons
- ▶ 2.15pm - Toilet break
- ▶ 3.25pm - Home time

Curriculum

Autumn

Science: Animals Including Humans (nutrition, skeleton, diet), Plants

Geography/History : the UK (counties, cities, landmarks); local history study looking at Offa's Dyke)

Spring

Science: Rocks

Geography/History: Stone Age to Iron Age

Summer

Science: Forces and Magnets

Geography/History: the achievements of the earliest civilisations including Sumer, Indus, Shang Dynasty and a focus on Ancient Egypt; Rivers

P.E.

- ▶ Our PE days are Wednesday and Thursday.
- ▶ **Reception-Year 6**
Pupils may wear a **plain white t shirt** and **plain black shorts** or **jogging bottoms/leggings in colder weather**. Pupils should wear their **school jumper over the t-shirt**.
A school PE t-shirt is optional.
- ▶ We have seen an increase this year in PE clothing that does not meet this criteria and we ask that in September we return to the above expectations. It is not appropriate for pupils to wear football kits or dance outfits on PE days. Parents/carers will receive a letter if pupils are not wearing the appropriate PE kit. If you have any problems or questions about uniform or PE kits, please speak to your child's class teacher.

Times Tables

- ▶ National tests for Year 4
- ▶ Weekly test in class on Friday
- ▶ Weekly homework focusing on a specific times table and as the year goes on mixed times tables
- ▶ Daily Practice

Homework

- ▶ Reading – 20 minutes per night at home with someone who can hear them read.
- ▶ Maths – Times tables homework given out on Friday and returned the following Friday.
- ▶ Spellings – Given out on Wednesday by Mrs Jones and learned in preparation for a test on the following Wednesday.

Rewards

- ▶ Celebration assembly
- ▶ Head teacher award
- ▶ Presentation award
- ▶ Weekly reading raffle on Friday with prizes
- ▶ In class rewards – house points on Satchel

Reading Records

- ▶ Weekly check of reading records on **FRIDAY**
- ▶ 5 comments/signatures in the week = entry into reading raffle. Winning ticket picked out and the winner chooses a small prize

Communication

- ▶ TEAMS group Y3 22/23 with updates and information

Attendance



Our expectations

Children are expected to attend school regularly and punctually.

Missing out on lessons leaves children vulnerable to falling behind. Children with poor attendance achieve less in both primary and secondary school.'

Our aim at St Martins School is for our whole school attendance to be in line with or above local and national figures.

An attendance of 97% or higher is a realistic target which would allow our pupils to flourish in all aspects of their growth.

Schools that improve attendance, maintain high levels of attendance and minimise persistent absence all have a number of features in common.

They '**Listen, understand, empathise and support – but do not tolerate**'.

Absence procedures

Parents must contact the school as early as possible on the first day of their child's absence and every subsequent day of absence – updating the school on their child's condition and expected day of return.

You are kindly asked to contact school on 01691 776500, ideally by 8:30am if your child is not attending school.

School will send out an absence email should contact not have been made.

For pupils who are absent from school, in line with Shropshire policy, work will NOT be set for pupils to complete.

Lateness

Punctuality is of very important and lateness will not be tolerated.

The gate to Primary is opened for pupils to enter school and be ready for learning at 8.45am and is then locked at 8.55am.

Pupils reaching school outside of this time will need to enter and sign in at the main reception.

Unauthorised lateness after schools registration has closed will receive a code 'U' to indicate that the pupil is in school after arriving late, this will count as an absent mark.

appointments

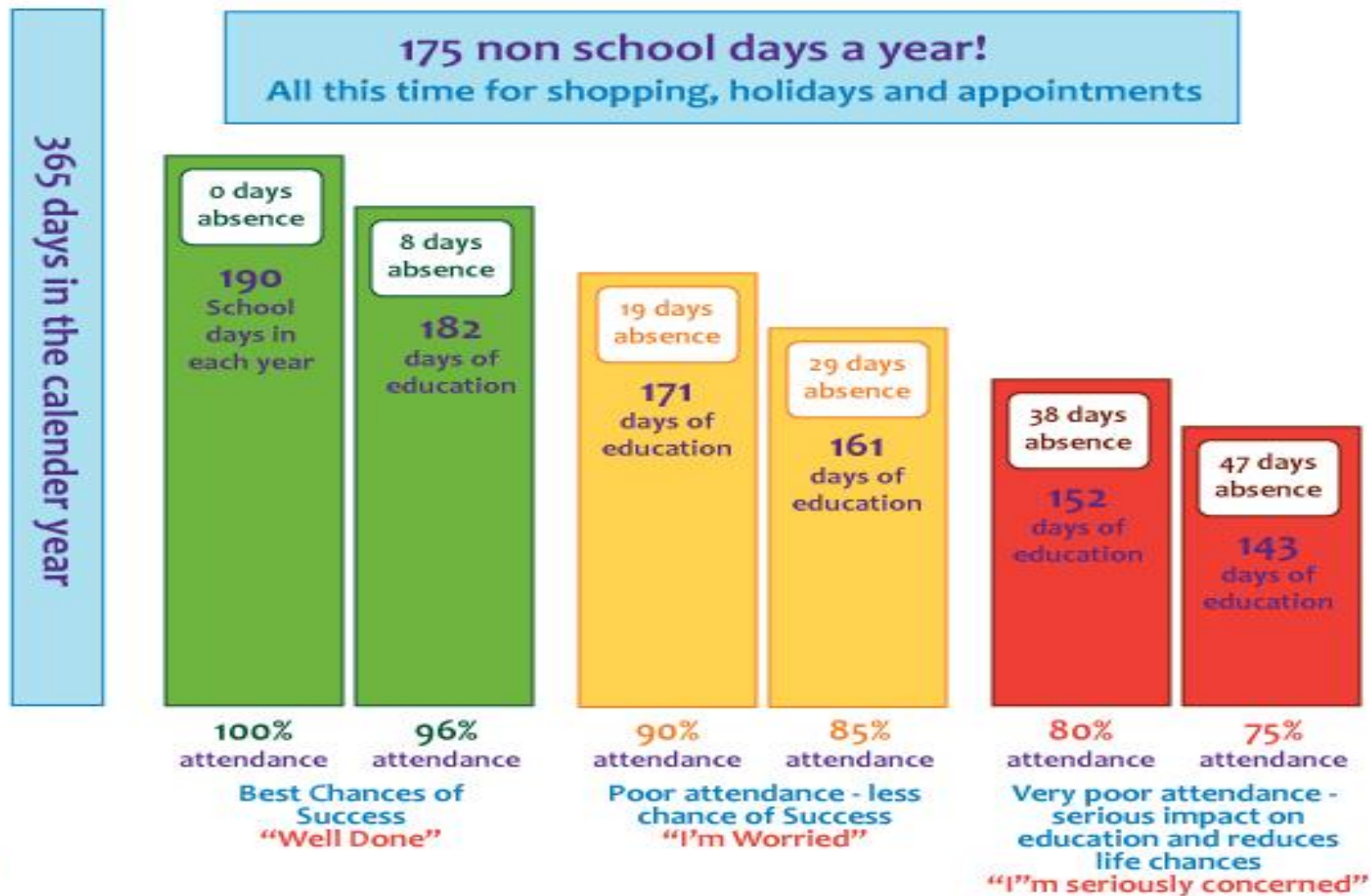
As far as possible, parents/carers should attempt to book medical and dental appointments outside of school hours. Where this is not possible, appointments cards or letters should be brought to school to enable authorisation of absence.

If the appointment requires the pupil to leave during the school day, they must be signed out by a parent/carer and signed back in on their return.

Pupils must attend school before and after the appointment where possible.

Good attendance means...

BEING IN SCHOOL AT LEAST 96% OF THE TIME; NO MORE THAN 8 DAYS OFF.



Regular absence

Our target attendance within school is 96%.

Should an individual child's attendance fall below this level staff will invite parents/carers into school to discuss how we can support you/your child in improving levels of attendance.

The Educational Welfare Officer will also be monitoring attendance and will offer additional support in this area.

Regular absence

In the case of regular absence or continued absence or attendance which falls below expectations, medical evidence for proof of absence may be requested. This evidence may include:

- GP appointment card (name/date/time clearly stated)
- Prescription
- Medical packaging with name of child on.
- Medication.
- Hospital letter/appointment letter.

Arrangements will be made for parents/carers to meet with their class teacher or a member of the Student Support Services team to support pupils in improving their attendance.

Questions