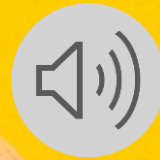


# Pearson Edexcel GCSE Psychology (9-1)

September 2023





**What is  
psychology?**

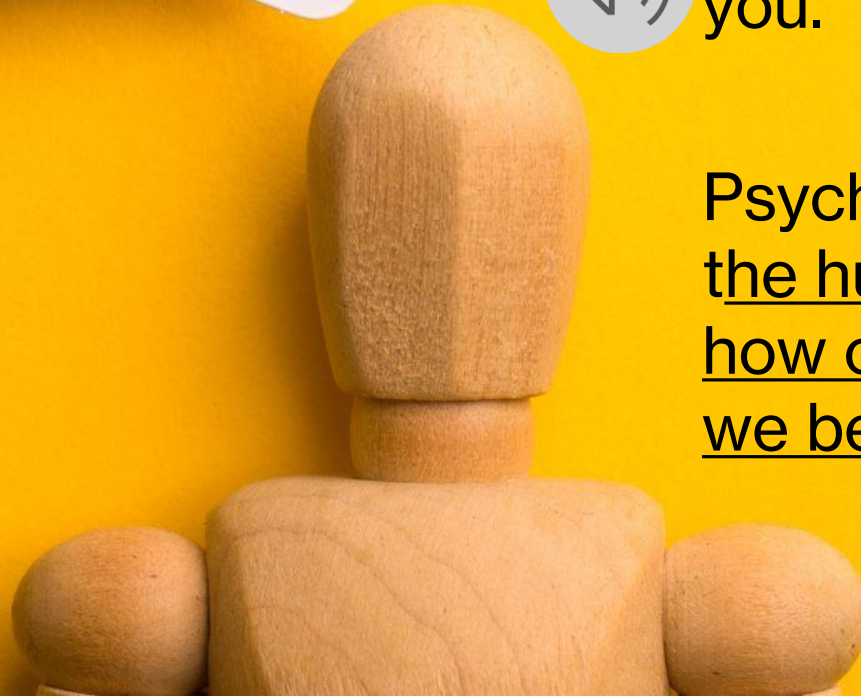


Have you ever wondered how  
does the human mind work or  
why we do the things we do?

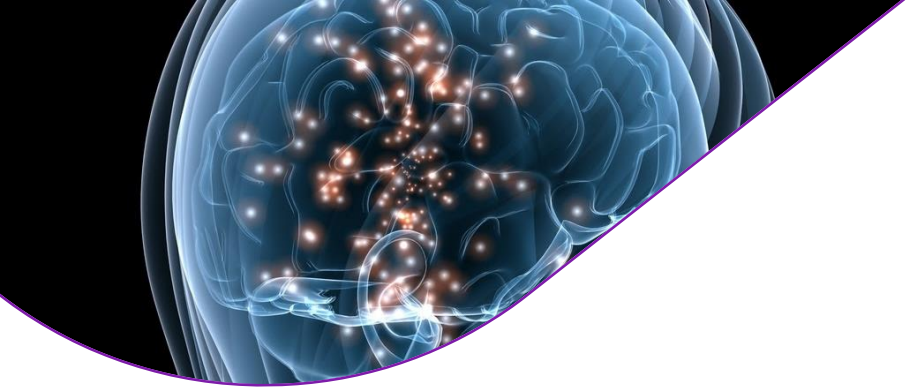
If the answer is "Yes" then  
GCSE Psychology is for  
you.



Psychology is the scientific study of  
the human mind, how it works and  
how our experiences affect the way  
we behaviour.







# **Why study psychology?**





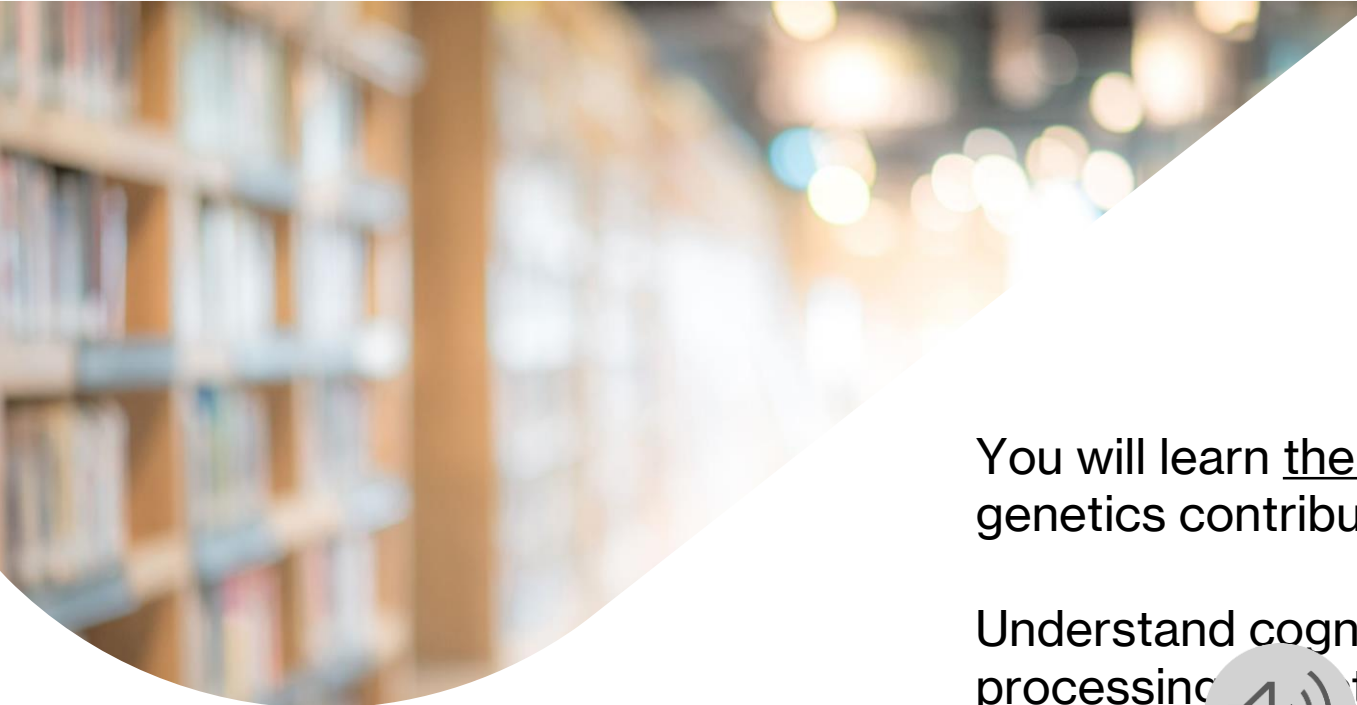
**You will get an understanding and knowledge about:**

- Debates in psychology, including 'reductionism/holism' and 'nature/nurture'
- The history of psychological knowledge and how they inform our understanding of behaviour
- The contribution of psychology to an understanding of individual, social and cultural diversity
- The relationships between the core areas of psychology
- The accuracy of research methods



**What will I learn?**





You will learn the biology of the mind, how neuroscience and genetics contribute to behaviour

Understand cognition and how thoughts, information and mental processing affect behaviour

Understand the impact of social and environmental factors on behaviour and the influence of groups

Understand how individuals change throughout their lives, with a particular focus on childhood and how both nature and nurture can affect individuals

Understand the complex nature of human behaviour and experiences and why and how people are different



**What topics will I look**





# You will learn about...

- ***Development*** – How did you develop?
- ***Memory*** – How does your memory work?



- ***Psychological problems*** – How would psychological problems affect you?
- ***The brain and neuropsychology*** – How does your brain affect you?
- ***Social influence*** – How do others affect you?



**You will also  
study 2 of the  
optional topics...**



- ***Criminal psychology*** – Why do people become criminals?
- ***The self*** – What makes you who you are?
- ***Perception*** – How do you interpret the world around you?
- ***Sleep and dreaming*** – Why do you need to sleep and dream?
- ***Language, thought and communication*** – How do you communicate with others?

**How will I be  
examined?**





Psychology consists of **two** externally-examined **papers**.

Students must complete all **assessment** in May/June of **Year 11**.

**Paper 1** is 1 hour and 45 minutes and is **55%** of the final grade.

**Paper 2** is 1 hour and 20 minutes and is **45%** of the final grade.



# Reasons to study GCSE Psychology

- As an introduction to GCE (A-Level) Psychology
- As a guide to what motivates you, to work and study
- To help you understand how people behave in the world
- To help you think about who you are and how others affect you
- To understand how and why people behave differently
- An understanding of psychology will help you in any career because you learn about how you think, and you learn about why other people may think the way that they do.



# Psychology and jobs

- All jobs involve people communicating with other people and finding ways to agree, even when this is agreeing that we are different.
- Specific careers that psychology would be useful for include:
  - The Police
  - Teaching
  - Social Services
  - The Law
  - Business
  - Medicine



# Interested?

- GCSE Psychology is an amazing opportunity to answer some of the most important questions that you have about the human mind and the world you will grow up into.

- *Why do you feel the way you do?*
- *Why do people behave the way that they do?*
- *Why are we affected by the behaviour of others?*
- *How can we change the way we feel and behave?*
- *How can you be accepted for who you are?*

